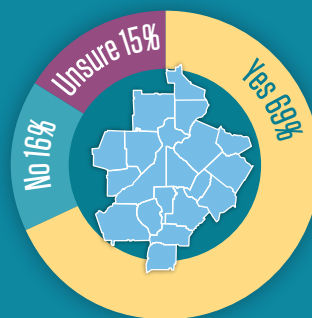


REGIONAL JOB GROWTH & TRANSIT EXPANSION



Should the region strive for a more equitable distribution of economic opportunities?



Are connections with a regional transit network essential for existing/future job centers to grow and be successful in the future?

YES
86%

NO
8%

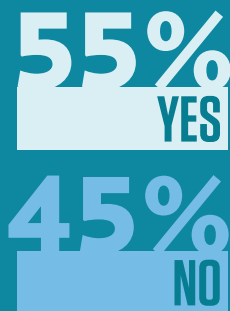
UNSURE
6%

How important is it for the region to promote a variety of housing options that are connected to existing and future job centers via expanded transit?

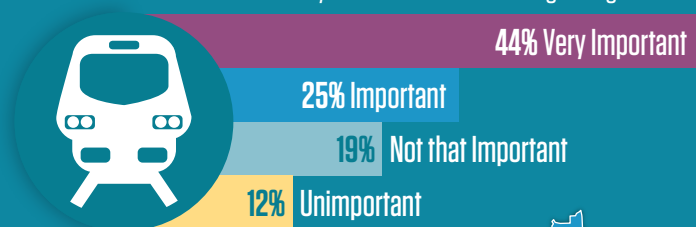


44% Very Important
25% Important
19% Not that Important
12% Unimportant

Have you ever made a choice regarding employment, education or housing based on access to transit?



How important is it to you to have a public transit option available where you live in the Atlanta region right now?



Which of the following characteristics are most important to you in determining where you live:



Affordable Housing 76%



Walkable 48%



Services 60%



Quality School System 46%



Close to Work 56%

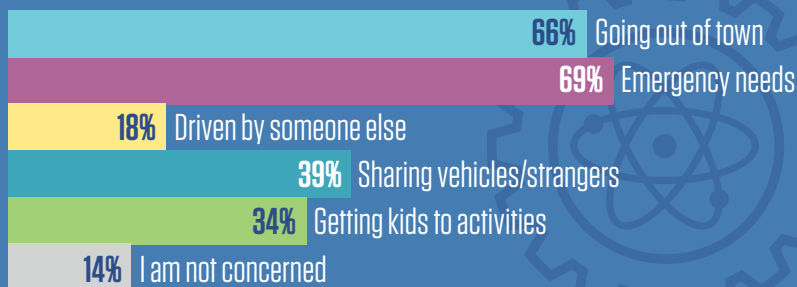


Proximity to Family 21%



TECHNOLOGY TRENDS

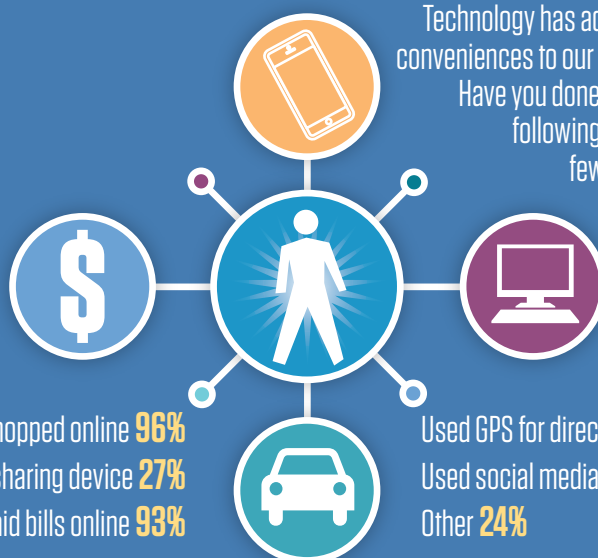
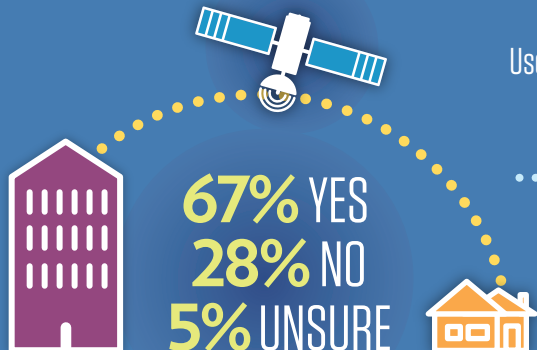
Taxis, public transit, rentals and mobile services provide non-car owners with other options. If these services were widely available and affordable, which would you still consider to be barriers to going carless in the Atlanta region?



Do you own a smartphone or plan on purchasing one in the near future?

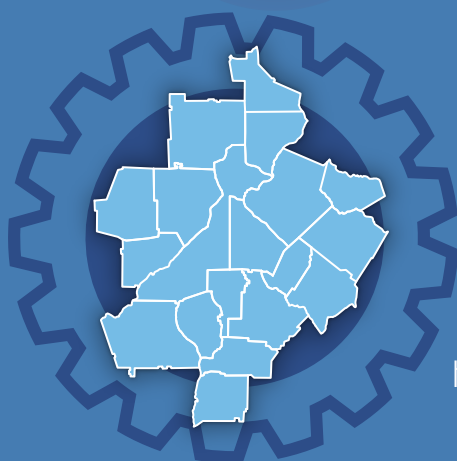
YES 92%
NO 7%
UNSURE 1%

Is teleworking a possibility for the type of work you do?



If it is possible for you, how many days a week, on average, would you like to telework?

WEEK ONE						
Sun	Mon	Tues	Wed	Thrs	Fri	Sat
	0 Days	1 Day	2 Days	3 Days	4 Days	5+ Days
	10%	13%	26%	20%	8%	23%



What use of technology would best help our region have a world-class transit system?



AUTONOMOUS VEHICLES



Have you heard of autonomous vehicles?



Are autonomous vehicles realistic in a couple decades?

YES 57%

NO 20%

UNSURE 23%

If autonomous vehicles led to less traffic, how likely would you be to move?



If you would move, would it be closer or farther from work?

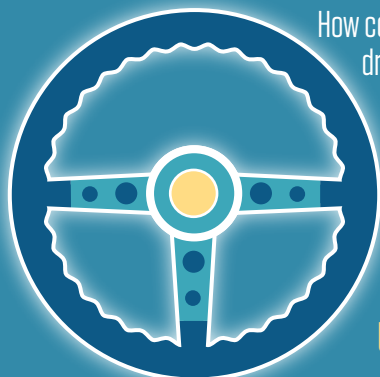


CLOSER TO 23%

UNSURE 14%
SAME DISTANCE 12%
NOT LIKELY TO MOVE 37%



FARTHER FROM 14%



How comfortable would you be to transfer driving control to an autonomous vehicle?



Are driverless cars a viable option for people who cannot drive themselves?

UNSURE 13%
NO 12%

YES 75%

Should the State of Georgia support the implementation of autonomous vehicles?

